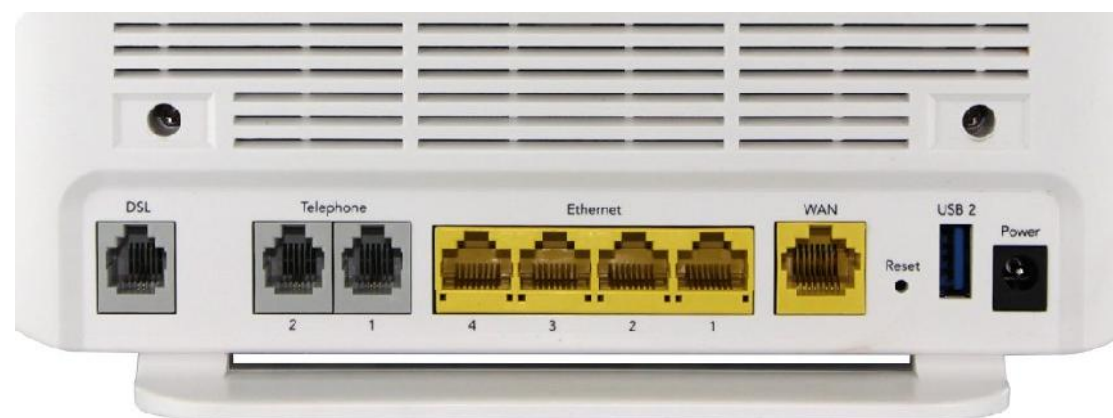




GoInternet Setup Guide for Netcomm NF4V Modem Router (VDSL)



To install the router:

Connect Router to power

Connect the DSL port on the router to a jackpoint on the wall

Connect Router to computer (i.e.: PC or laptop) via an ethernet cable.

Setting up for GoInternet Basic and Fast – VDSL

To set the modem up for the *Turbo* plan:

Launch your Web Browser (e.g.: Internet Explorer, Chrome or Firefox).

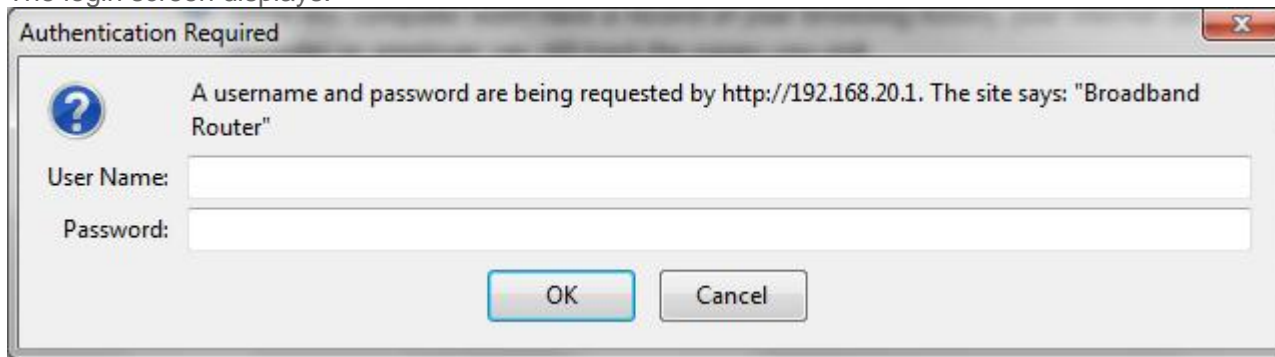
Access the modem settings:



Type *192.168.20.1* into the address bar.

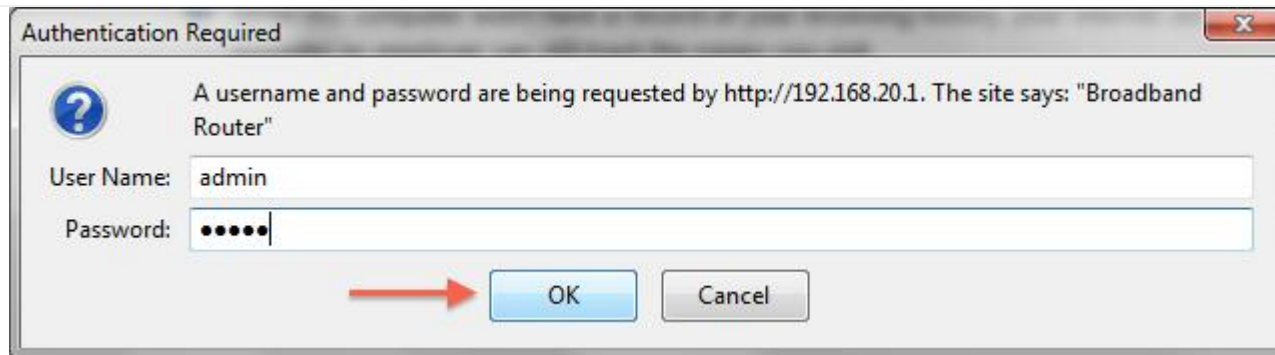
Press the ENTER key.

The login screen displays.



Login to the modem page:

Username	<i>admin</i>
Password	<i>admin</i>



If that Username and Password do not work you should RESET the modem to factory settings (see the instructions below).

Click the **Log In** button.

The modem's Dashboard screen displays.

The screenshot shows the NetComm Wireless NF4V modem dashboard. The top header features the NetComm Wireless logo and the model name NF4V. A left-hand navigation menu lists: Device Info, Basic Setup, Quick Setup, Advanced Setup, Wireless, Voice, Diagnostics, and Management. The main content area is titled 'Device Info' and contains a table with the following data:

Manufacturer:	NetComm Wireless
Product Class:	NF4V
Serial Number:	131
Build Timestamp:	201309161742
Software Version:	GURNV5.OT132A-8-NC.AU-R5B014.EN
Bootloader (CFE) Version:	1.0.38-114.170
DSL PHY and Driver Version:	A2pv6F039d.d24l
Wireless Driver Version:	6.30.163.23.cpe4.12L
Voice Service Version:	V2.4
Uptime:	0D 0H 2M 56S

Below this table, a note states: "This information reflects the current status of your WAN connection." This is followed by another table showing WAN connection details:

Line Rate - Upstream (Kbps):	696
Line Rate - Downstream (Kbps):	19163
LAN IPv4 Address:	192.168.20.1
Default Gateway:	
Primary DNS Server:	0.0.0.0
Secondary DNS Server:	0.0.0.0
LAN IPv6 Address:	
Default IPv6 Gateway:	
Date/Time:	Sat Nov 19 00:02:47 2011

Configure the modem for GoInternet:



From the menu on the left, click **Advanced Setup**.



Remove all old WAN services if there are any present.

1. Click on WAN service.
2. Tick each interface that is present.
3. Click remove.

- Device Info
- Basic Setup
- Advanced Setup
 - Layer2 Interface
 - ATM Interface**
 - PTM Interface
 - ETH Interface
- WAN Service
- LAN
- NAT

DSL ATM Interface Configuration

Choose Add, or Remove to configure DSL ATM interfaces.

Interface	VPI	VCI	DSL Latency	Category	Peak Cell Rate(cells/s)	Sustainable Cell Rate(cells/s)	Max Burst Size(bytes)	Min Cell Rate(cells/s)	Link Type	Connection Mode	IP QoS	MPAAL Prec/Alg/Wght	Remove
atm0	0	100	Path0	UBR					PPPoA	DefaultMode	Support	8/WRR/1	<input type="checkbox"/>

Add Remove

1

3

2

Check to see that there are no old PTM interfaces. If there are, remove them with the steps below:

- Click PTM Interface
- Tick the remove box(es)
- Click remove.

Add your new PTM interface.

Click PTM Interface.2. Click the Add button under the PTM interface.

- Device Info
- Basic Setup
- Advanced Setup
 - Layer2 Interface
 - ATM Interface
 - PTM Interface
 - ETH Interface
- WAN Service
- LAN
- NAT
- Security
- Parental Control

DSL PTM Interface Configuration

Choose Add, or Remove to configure DSL PTM interfaces.

Interface	DSL Latency	PTM Priority	Connection Mode	IP QoS	Remove
-----------	-------------	--------------	-----------------	--------	--------



Enter the required settings for your new PTM interface. Leave all settings on defaults². Click Apply/Save.

- Device Info
- Basic Setup
- Advanced Setup
 - Layer2 Interface
 - ATM Interface
 - PTM Interface
 - ETH Interface
- WAN Service
- LAN
- NAT
- Security
- Parental Control
- Quality of Service
- Routing
- DNS
- DSL

PTM Configuration

This screen allows you to configure a PTM flow.

Select DSL Latency

- Path0 (Fast)
- Path1 (Interleaved)

Select Scheduler for Queues of Equal Precedence as the Default Queue

- Weighted Round Robin
- Weighted Fair Queuing

Default Queue Weight: [1-63]

Default Queue Precedence: [1-8] (lower value, higher priority)

Default Queue Shaping Rate: [Kbits/s] (blank indicates no shaping)

Default Queue Shaping Burst Size: [bytes] (shall be >=1600)



Add a new WAN service.

Click WAN service

Click Add

- Device Info
- Basic Setup
- Advanced Setup
 - Layer2 Interface
 - ATM Interface
 - PTM Interface
 - ETH Interface
- WAN Service
- LAN
- NAT
- Security
- Parental Control

DSL PTM Interface Configuration

Choose Add, or Remove to configure DSL PTM interfaces.

Interface	DSL Latency	PTM Priority	Connection Mode	IP QoS	Remove
-----------	-------------	--------------	-----------------	--------	--------



Select your new PTM interface.

Select ptm0\0_0_100).

Click Next.

WAN Service Interface Configuration

Select a layer 2 interface for this service

Note: For ATM interface, the descriptor string is (portId_vpi_vci)

For PTM interface, the descriptor string is (portId_high_low)

Where portId=0 --> DSL Latency PATH0

portId=1 --> DSL Latency PATH1

portId=4 --> DSL Latency PATH0&1

low =0 --> Low PTM Priority not set

low =1 --> Low PTM Priority set

high =0 --> High PTM Priority not set

high =1 --> High PTM Priority set

Enter a service name if desired.

Select PPP over Ethernet.

Enter Priority 0 and VLAN ID 10.

Change the service name if desired, or leave on the default and click **Next**.

WAN Service Configuration

Select WAN service type:

- PPP over Ethernet (PPPoE) ← 1
- IP over Ethernet
- Bridging

Enter Service Description:

For tagged service, enter valid 802.1P Priority and 802.1Q VLAN ID.
For untagged service, set -1 to both 802.1P Priority and 802.1Q VLAN ID.

Enter 802.1P Priority [0-7]:

Enter 802.1Q VLAN ID [0-4094]:

 ← 3

Enter a PPP username and password.

Enter a PPP username and password. These can be anything you like, but cannot contain special characters or be left blank.

Set authentication method to AUTO and MTU to 1492. Enter 802.1P Priority as 0 and add Vlan as you were provided by GoInternet

Click Next.

PPP Username and Password

PPP usually requires that you have a user name and password to establish your connection. In the boxes below, enter the user name and password that your ISP has provided to you.

PPP Username:

PPP Password:

Authentication Method: **AUTO** ▼

MTU[576-1492]:



- Config KeepAlive
- Enable Fullcone NAT
- Dial on demand (with idle timeout timer)
- Enable IPv4 for this service
- Use Static IPv4 Address
- Enable IPv6 for this service
- Enable PPP Debug Mode

Multicast Proxy

- Enable IGMP Multicast Proxy



Ensure ppp0.1 is in the left column, and click Next.

Device Info**Basic Setup****Advanced Setup**

Layer2 Interface

ATM Interface

PTM Interface

ETH Interface

WAN Service

LAN

NAT

Security

Parental Control

Quality of Service

Routing

DNS

DSL

UPnP

DNS Proxy

DUMA

Routing -- Default Gateway

Default gateway interface list can have multiple WAN interfaces served as system default gateways but only one will be used according to the highest and the last one the lowest priority if the WAN interface is connected. Priority order can be changed by removing all and adding them b

Selected Default Gateway Interfaces



Available Routed WAN Interfaces

Back

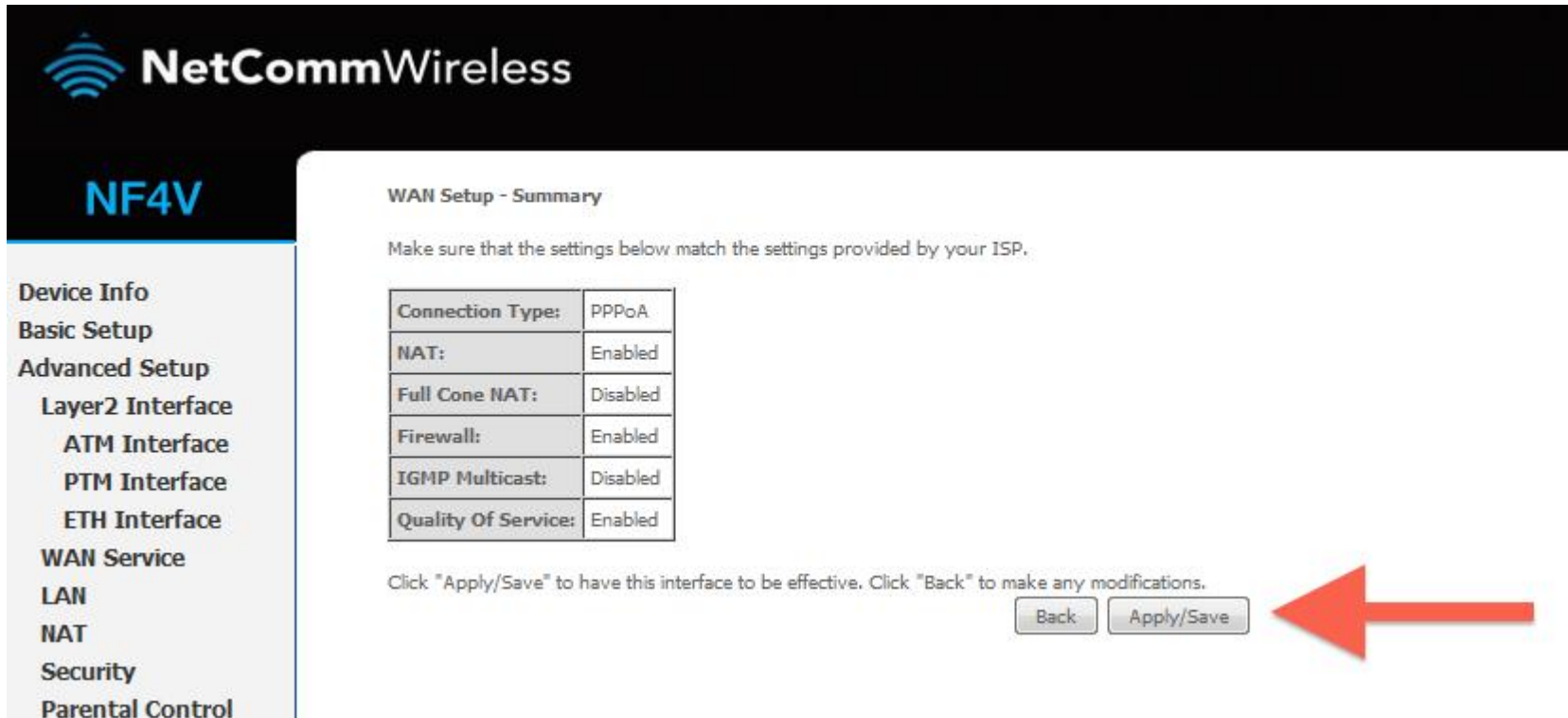
Next



Ensure ppp0.1 is in the left column, and click Next.

Click **Save/Reboot**

Click Apply/Save.



NetCommWireless

NF4V

Device Info
Basic Setup
Advanced Setup
Layer2 Interface
ATM Interface
PTM Interface
ETH Interface
WAN Service
LAN
NAT
Security
Parental Control

WAN Setup - Summary

Make sure that the settings below match the settings provided by your ISP.

Connection Type:	PPPoA
NAT:	Enabled
Full Cone NAT:	Disabled
Firewall:	Enabled
IGMP Multicast:	Disabled
Quality Of Service:	Enabled

Click "Apply/Save" to have this interface to be effective. Click "Back" to make any modifications.

Reboot your router. Click Reboot in the bottom left menu.

Click the reboot button.

NF4V

- Device Info
- Basic Setup
- Advanced Setup
- Wireless
- Voice
- Diagnostics
- Management
 - Settings
 - System Log
 - SNMP Agent
 - TR-069 Client
 - Internet Time
 - Access Control
 - Update Software
 - Reboot

Click the button below to reboot the router.

Reboot



Your router should now restart.



NF4V

Device Info
Basic Setup
Advanced Setup
Wireless
Voice
Diagnostics

Broadband Router Reboot

The Broadband Router is rebooting.

Close the Broadband Router Configuration window and wait for 2 minutes before reopening your web browser.

Your router is now configured for GoInternet VDSL. After your router has rebooted you should be able to browse the internet.

Disclaimer: Our modem guides are just for setting up your GoInternet connection, please refer to all manufacturer settings and support material, we recommend obtaining professional IT services to install your Modem/Router.

Resetting the Router

If something goes wrong with your router, you can reset the device to the default Factory settings. You will lose any of your customised settings.

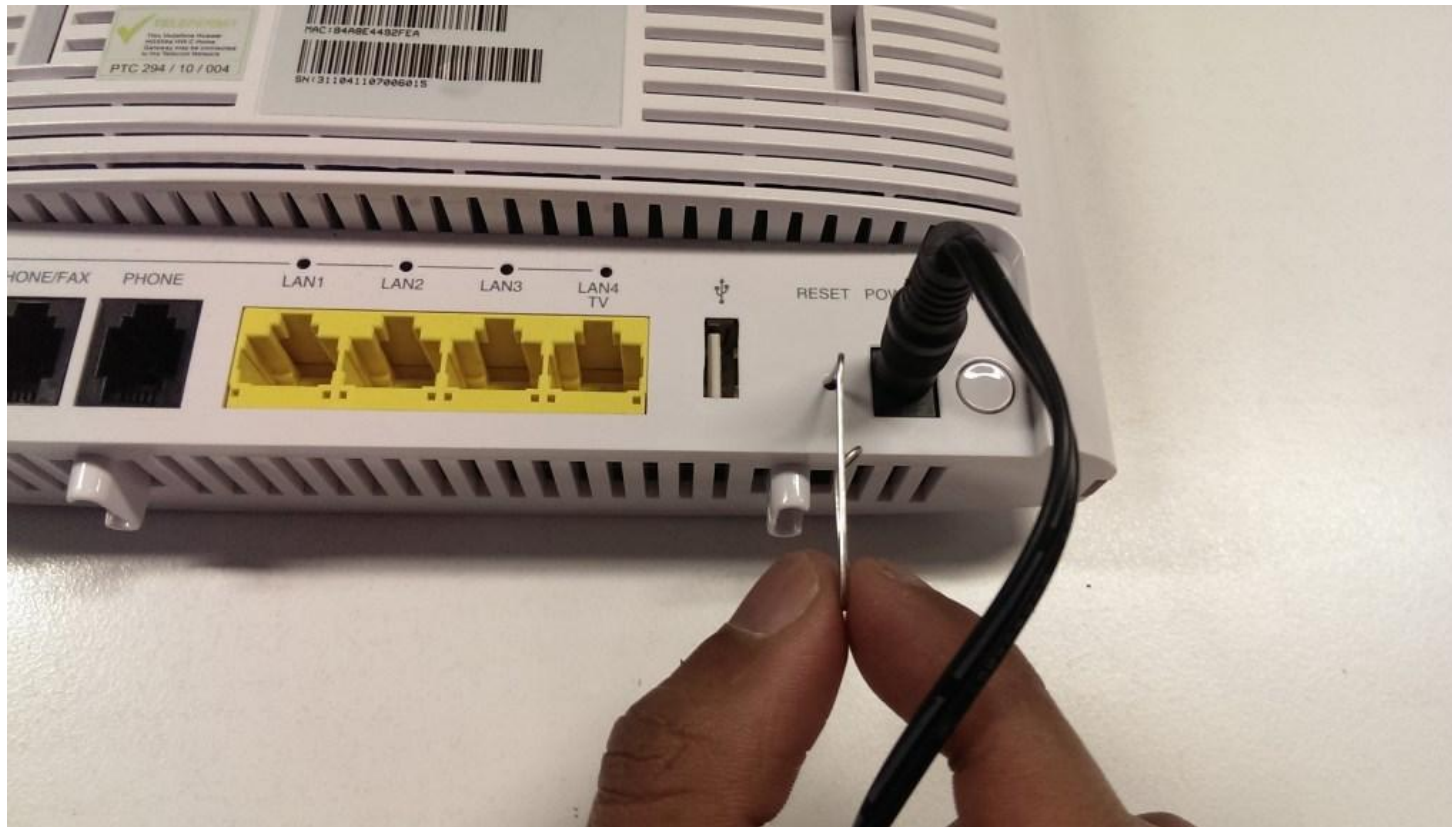
To reset the modem:

Check it is on (i.e.: plugged in with one or more lights lit).

You cannot reset the modem if it is off.

Use something, like a paperclip, to press and hold the **Factory Reset** button, which is in between the plug and the USB port.





Hold for 5 seconds.

Release the **Factory Reset** button.

After a few seconds, the modem will start to reset.

The modem will have reset itself to its original factory settings. Any customised settings will have been lost.